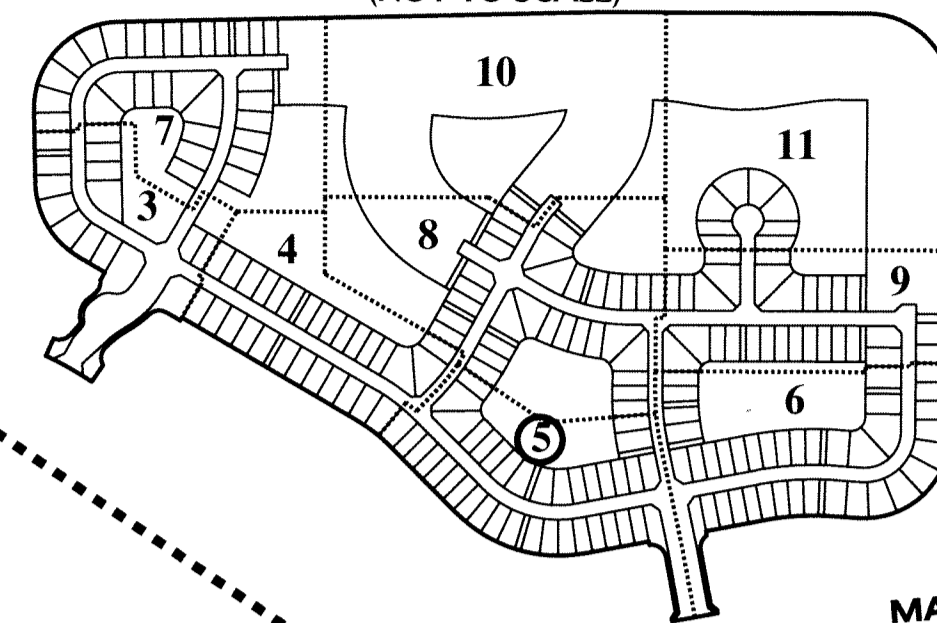


# HAMMOCKS OF WESTLAKE

BEING A REPLAT OF TRACT "Q" OF TOWN CENTER PARKWAY NORTH PER PLAT BOOK 123, PAGE 106-118, BEING A PORTION OF SECTION 6, TOWNSHIP 43 SOUTH, RANGE 41 EAST, AND A PORTION OF SECTION 1, TOWNSHIP 43 SOUTH, RANGE 40 EAST, CITY OF WESTLAKE, PALM BEACH COUNTY, FLORIDA

## SHEET MAP (NOT TO SCALE)



### CURVE DATA TABLE

NO.	RADIUS	DELTA	ARC	CHORD	BEARING
C4	50.00'	087°58'32"	76.77'	69.45'	N 54°34'13" W
C5	500.00'	055°34'57"	485.05'	466.25'	N 72°47'28" W
C6	500.00'	015°00'00"	130.90'	130.53'	N 52°30'00" W
C12	650.00'	015°00'00"	170.17'	169.68'	N 52°30'00" W
C13	650.00'	001°14'30"	14.09'	14.09'	N 45°37'15" W
C14	600.00'	014°30'28"	151.93'	151.52'	N 36°30'16" E
C17	795.00'	012°16'04"	170.22'	169.89'	S 05°56'55" E
C18	350.00'	055°34'57"	339.53'	326.38'	S 72°47'28" E
C22	625.00'	015°00'00"	163.62'	163.16'	S 52°30'00" E

# 75

### CURVE DATA TABLE

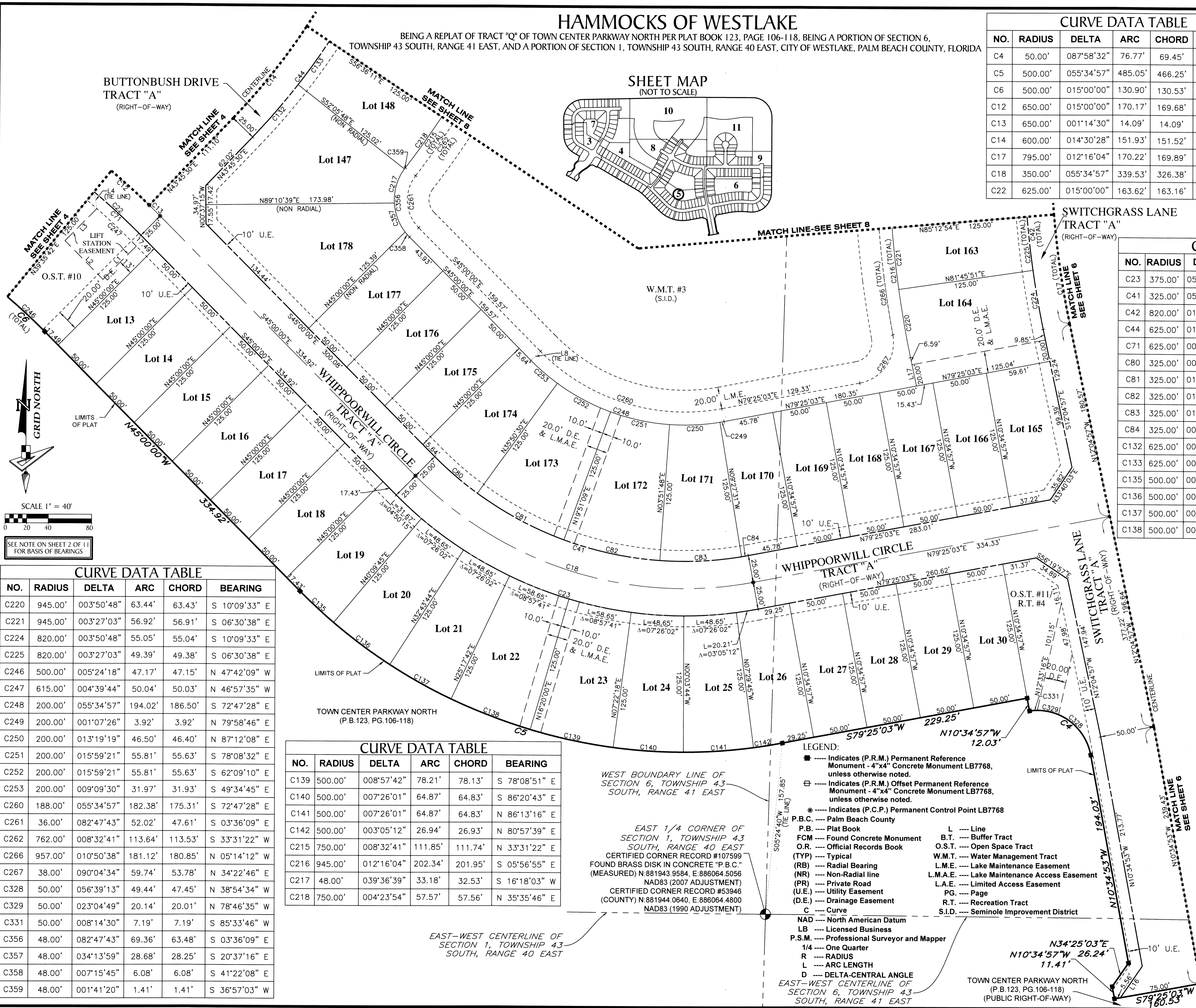
NO.	RADIUS	DELTA	ARC	CHORD	BEARING
C23	375.00'	055°34'57"	363.78'	349.69'	S 72°47'28" E
C41	325.00'	055°34'57"	315.28'	303.06'	S 72°47'28" E
C42	820.00'	012°16'04"	175.57'	175.24'	N 05°56'55" W
C44	625.00'	014°30'28"	158.26'	157.83'	N 36°30'16" E
C71	625.00'	005°24'18"	58.96'	58.94'	N 47°42'09" W
C80	325.00'	009°09'30"	51.95'	51.89'	S 49°34'45" E
C81	325.00'	015°59'21"	90.70'	90.40'	S 62°09'10" E
C82	325.00'	015°59'21"	90.70'	90.40'	S 78°08'32" E
C83	325.00'	013°19'19"	75.57'	75.40'	N 87°12'08" E
C84	325.00'	001°07'26"	6.37'	6.37'	N 79°58'46" E
C132	625.00'	005°51'18"	63.87'	63.84'	N 40°49'51" E
C133	625.00'	004°30'23"	49.16'	49.14'	N 35°39'00" E
C135	500.00'	004°50'15"	42.22'	42.20'	S 47°25'07" E
C136	500.00'	007°26'01"	64.87'	64.83'	S 53°33'16" E
C137	500.00'	007°26'01"	64.87'	64.83'	S 60°59'17" E
C138	500.00'	008°57'42"	78.21'	78.13'	S 69°11'09" E

### LINE DATA TABLE

NO.	BEARING	LENGTH
L1	S 45°00'00" W	43.26'
L2	N 45°00'00" W	50.00'
L3	N 45°00'00" E	41.55'
L4	N 10°10'24" W	15.66'
L8	N 45°00'00" E	12.00'
L16	S 34°25'03" W	35.36'
L17	N 12°04'57" W	26.59'

**GeoPoint**  
Surveying, Inc.

4152 W. Blue Heron Blvd.  
Suite 105  
Riviera Beach, FL 33404  
Phone: (561) 444-2720  
www.geopointsurvey.com  
Licensed Business Number LB 7768



### CURVE DATA TABLE

NO.	RADIUS	DELTA	ARC	CHORD	BEARING
C220	945.00'	003°50'48"	63.44'	63.43'	S 10°09'33" E
C221	945.00'	003°27'03"	56.92'	56.91'	S 06°30'38" E
C224	820.00'	003°50'48"	55.05'	55.04'	S 10°09'33" E
C225	820.00'	003°27'03"	49.39'	49.38'	S 06°30'38" E
C246	500.00'	005°24'18"	47.17'	47.15'	N 47°42'09" W
C247	615.00'	004°39'44"	50.04'	50.03'	N 46°57'35" W
C248	200.00'	055°34'57"	194.02'	186.50'	S 72°47'28" E
C249	200.00'	001°07'26"	3.92'	3.92'	N 79°58'46" E
C250	200.00'	013°19'19"	46.50'	46.40'	N 87°12'08" E
C251	200.00'	015°59'21"	55.81'	55.63'	S 78°08'32" E
C252	200.00'	015°59'21"	55.81'	55.63'	S 62°09'10" E
C253	200.00'	009°09'30"	31.97'	31.93'	S 49°34'45" E
C260	188.00'	055°34'57"	182.38'	175.31'	S 72°47'28" E
C261	36.00'	082°47'43"	52.02'	47.61'	S 03°36'09" E
C262	762.00'	008°32'41"	113.64'	113.53'	S 33°31'22" W
C266	957.00'	010°50'38"	181.12'	180.85'	N 05°14'12" W
C267	38.00'	090°04'34"	59.74'	53.78'	N 34°22'46" E
C328	50.00'	056°39'13"	49.44'	47.45'	N 38°54'34" W
C329	50.00'	023°04'49"	20.14'	20.01'	N 78°46'35" W
C331	50.00'	008°14'30"	7.19'	7.19'	S 85°33'46" W
C356	48.00'	082°47'43"	69.36'	63.48'	S 03°36'09" E
C357	48.00'	034°13'59"	28.68'	28.25'	S 20°37'16" E
C358	48.00'	007°15'45"	6.08'	6.08'	S 41°22'08" E
C359	48.00'	001°41'20"	1.41'	1.41'	S 36°57'03" W

### CURVE DATA TABLE

NO.	RADIUS	DELTA	ARC	CHORD	BEARING
C139	500.00'	008°57'42"	78.21'	78.13'	S 78°08'51" E
C140	500.00'	007°26'01"	64.87'	64.83'	S 86°20'43" E
C141	500.00'	007°26'01"	64.87'	64.83'	N 86°13'16" E
C142	500.00'	003°05'12"	26.94'	26.93'	N 80°57'39" E
C215	750.00'	008°32'41"	111.85'	111.74'	N 33°31'22" E
C216	945.00'	012°16'04"	202.34'	201.95'	S 05°56'55" E
C217	48.00'	039°36'39"	33.18'	32.53'	S 16°18'03" W
C218	750.00'	004°23'54"	57.57'	57.56'	N 35°35'46" E

**LEGEND:**

- Indicates (P.R.M.) Permanent Reference Monument - 4"x4" Concrete Monument LB7768, unless otherwise noted.
- Indicates (P.R.M.) Offset Permanent Reference Monument - 4"x4" Concrete Monument LB7768, unless otherwise noted.
- Indicates (P.C.P.) Permanent Control Point LB7768
- P.B.C. --- Palm Beach County
- P.B. --- Plat Book
- FCM --- Found Concrete Monument
- O.R. --- Official Records Book
- (TYP) --- Typical
- (RB) --- Radial Bearing
- (NR) --- Non-Radial line
- (PR) --- Private Road
- (U.E.) --- Utility Easement
- (D.E.) --- Drainage Easement
- C --- Curve
- NAD --- North American Datum
- LB --- Licensed Business
- P.S.M. --- Professional Surveyor and Mapper
- 1/4 --- One Quarter
- R --- RADIUS
- L --- ARC LENGTH
- D --- DELTA-CENTRAL ANGLE
- Line
- B.T. --- Buffer Tract
- O.S.T. --- Open Space Tract
- W.M.T. --- Water Management Tract
- L.M.E. --- Lake Maintenance Easement
- L.M.A.E. --- Lake Maintenance Access Easement
- L.A.E. --- Limited Access Easement
- PG. --- Page
- R.T. --- Recreation Tract
- S.I.D. --- Seminole Improvement District

WEST BOUNDARY LINE OF SECTION 6, TOWNSHIP 43 SOUTH, RANGE 41 EAST

EAST 1/4 CORNER OF SECTION 1, TOWNSHIP 43 SOUTH, RANGE 40 EAST  
CERTIFIED CORNER RECORD #107599  
FOUND BRASS DISK IN CONCRETE "P.B.C."  
(MEASURED) N:881943.9584, E:886064.5056  
NAD83 (2007 ADJUSTMENT)  
NAD83 (1990 ADJUSTMENT)  
CERTIFIED CORNER RECORD #53946  
(COUNTY) N:881944.0640, E:886064.4800  
NAD83 (1990 ADJUSTMENT)

EAST-WEST CENTERLINE OF SECTION 1, TOWNSHIP 43 SOUTH, RANGE 40 EAST

EAST-WEST CENTERLINE OF SECTION 6, TOWNSHIP 43 SOUTH, RANGE 41 EAST

SCALE 1" = 40'

SEE NOTE ON SHEET 2 OF 11 FOR BASIS OF BEARINGS

